



BILGIN'S
2022-23
fall winter collection



WOW

MAN



OxO Sable Fur Coat

Model: GTX1010-68

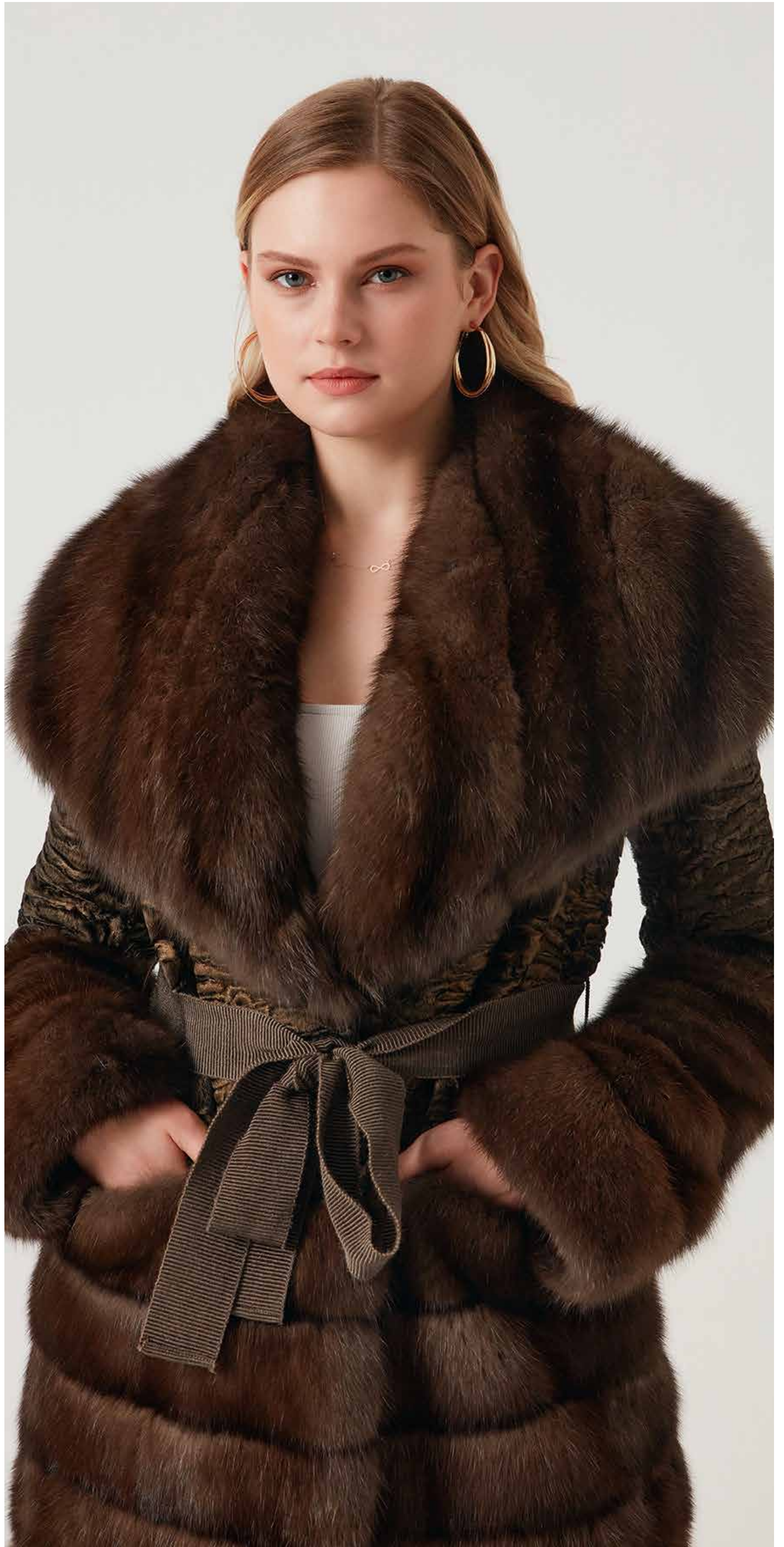
- Sable Fur
- Handmade
- Anti-Wrinkle System
- Hoodie



KOSH Sable Fur Coat

Model: KS-SBL2121-65

- *Sable*
- *Double-Layer Sewing System*
- *Anti-Wrinkle System*



WAKA Swakara Detailed Sable Fur Coat

Model: GTX1010-68

- *Sable - Swakara*
- *Double-Layer Sewing System*
- *Anti-Wrinkle System*



FLAG Sable Fur Overcoat

Model: GTX1010-68

- *Water and Wind Proof Special System*
- *Double-Layer Sewing System*
- *Anti-Wrinkle System*



MANTE Sable Fur Overcoat

Model: GAT-R30407-135

- *Sable Fur*
- *Double-Layer Sewing System*
- *Anti-Wrinkle System*
- *Breatable Fabric*



PALIA Chincilla Fur Detailed Cashmere Overcoat

Model: GTX1010-68

- *Cashmere & Chincilla Fur*
- *Double-Layer Sewing System*
- *Anti-Wrinkle System*
- *Breatable Fabric*



CAIN Lynx Fur Detailed Mink Fur Coat

Model: GTX1010-68

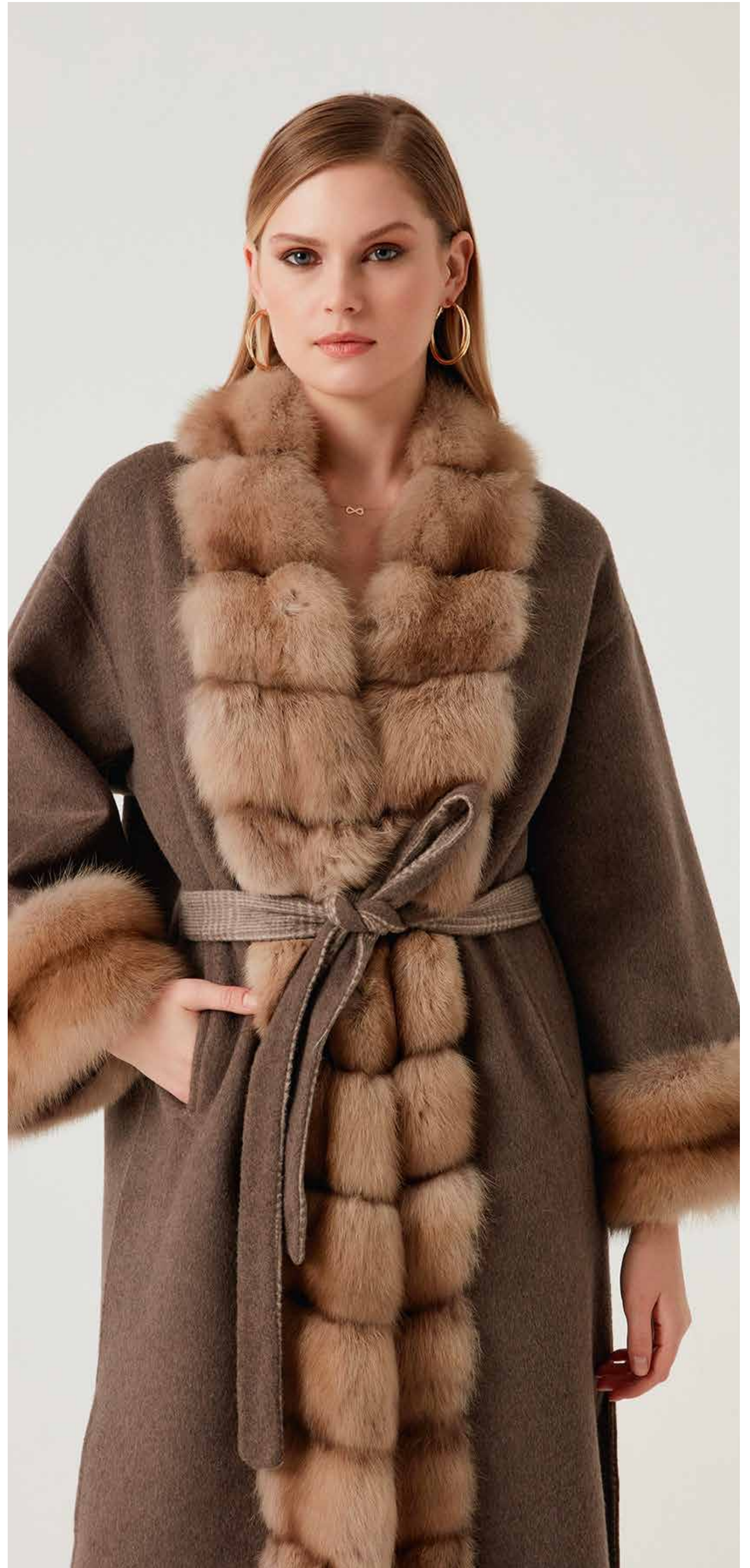
- *Lynx & Mink Fur*
- *Double-Layer Sewing System*
- *Anti-Wrinkle System*
- *Hoodie*



PEACOAT Fox Fur Detailed Lambskin Coat

Model: EKX0001T-70

- *Fox fur & Lambskin*
- *Double-Layer Sewing System*
- *Anti-Wrinkle System*
- *Hoodie*



CONT Sable Fur Overcoat

Model: GTX1010-68

- *Sable Fur*
- *Alpaca Fabric*
- *Double-Layer Sewing System*



CONSIN Sable Fur and Lamb Leather

Model: GTX1010-68

- Sable Fur
- Alpaca Fabric
- Double-Layer Sewing System



CAIN Chincilla Detailed Alpaca Overcoat

Model: GTX1010-68

- *Chincilla Fur*
- *Alpaca Fabric*
- *Double-Layer Sewing System*



LOBA Silver Fox Detailed Alpaca Overcoat

Model: GTX1010-68

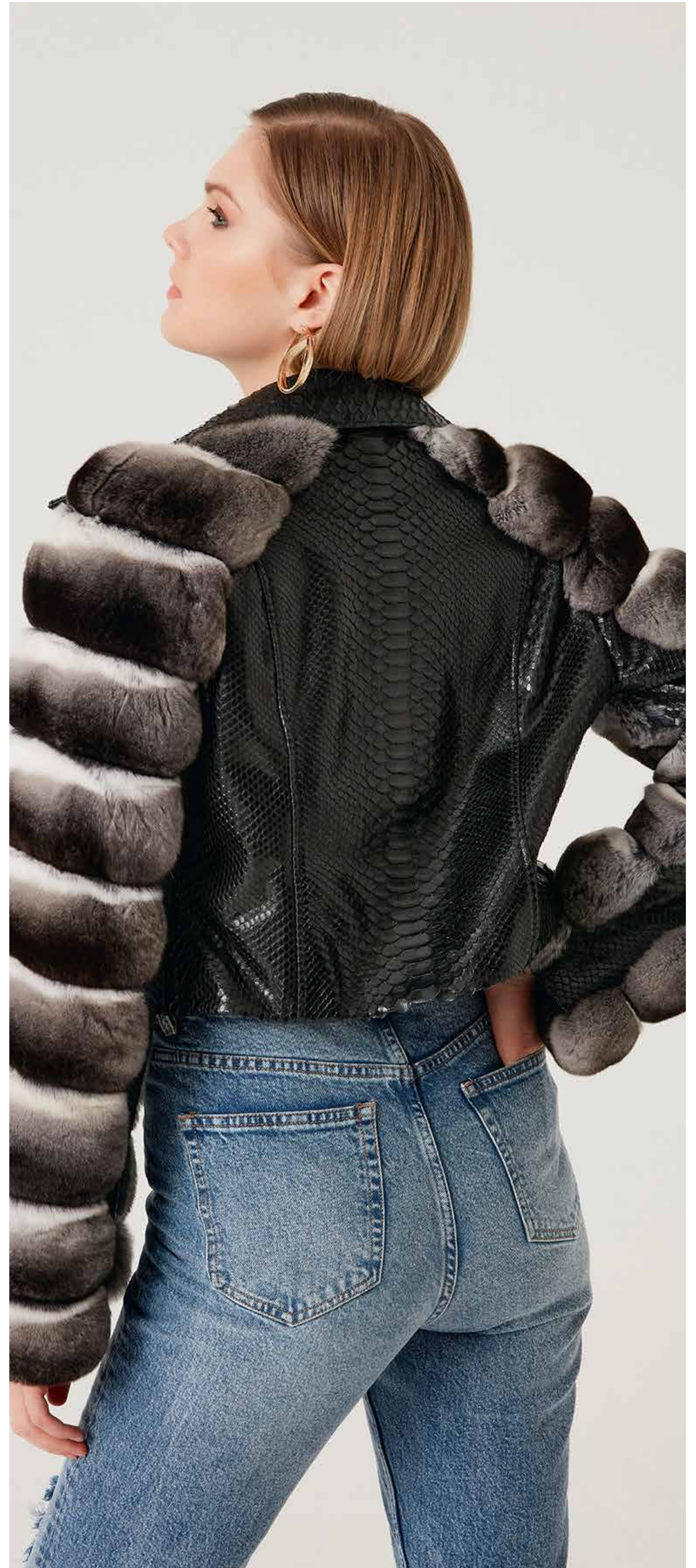
- *Silver Fox Fur*
- *Alpaca Fabric*
- *Double-Layer Sewing System*



TUPLE Lamb Leather Overcoat

Model: GTX1010-68

- *Lamb Leather*
- *Lightweight and Comfortable*
- *Double-Layer Sewing System*



SILK Chincilla Phyton Jacket

Model: GTX1010-68

- *Phyton Leather*
- *Chjncilla Fur Detailed*
- *Double-Layer Sewing System*
- *Lightweight and Comfortable*



WATE Sable Fur Overcoat

Model: GTX1010-68

- *Sable Fur*
- *Alpaca Fabric*
- *Double-Layer Sewing System*



CAIN Lynx

Model: GTX1010-68

- *Sable Fur*
- *Alpaca Fabric*
- *Double-Layer Sewing System*



QUEEN Lamb Leather Overcoat

Model: GTX1010-150

- *Chincilla Fur*
- *Alpaca Fabric*
- *Double-Layer Sewing System*



MOREE Rex Fur Detailed Cashmere Coat

Model: GTX1010-68

- *Rex Fur*
- *Cashmere Fabric*
- *Double-Layer Sewing System*



APA Fox Fur Detailed Cashmere Coat

Model: GTX1010-68

- *Fox Fur*
- *Cashmere Fabric*
- *Double-Layer Sewing System*



KAYK Sable Fur Coat

Model: GTX1010-68

- *Sable Fur*
- *Alpaca Fabric*
- *Double-Layer Sewing System*



ROZIT Mink Fur Cashmere Coat

Model: FER2412

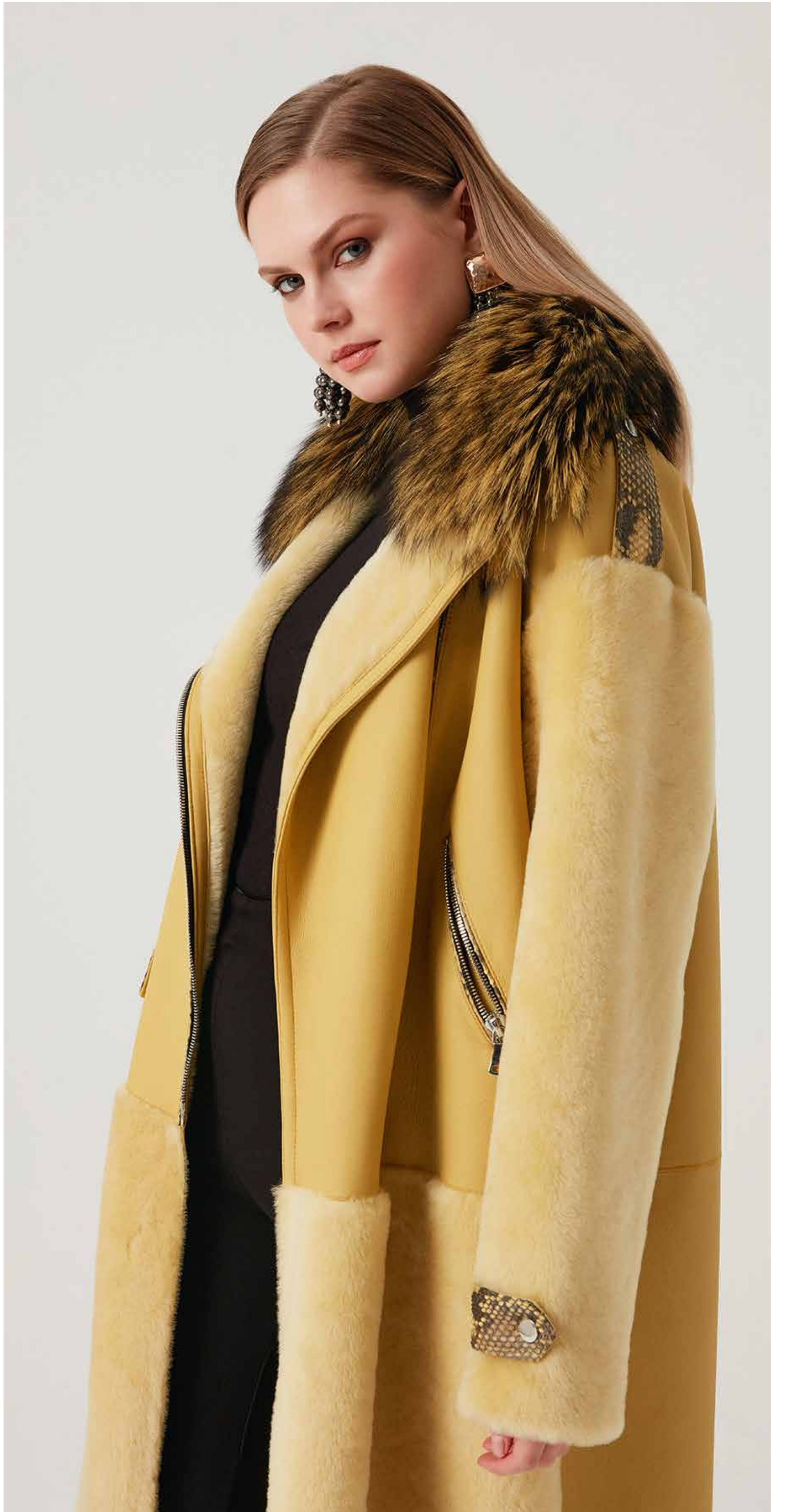
- *Mink Fur*
- *Alpaca Fabric*
- *Double-Layer Sewing System*



WARNA Mink Fur Coat

Model: GTX1010-68

- *Mink Fur*
- *Alpaca Fabric*
- *Double-Layer Sewing System*



FLAV Silver Fox - Lamb

Model: GTX1010-68

- *Water and Wind Proof Special System*
- *Double-Layer Sewing System*
- *Anti-Wrinkle System*
- *Breatable Fabric*



CAIN Silver Fox

Model: GTX1010-68

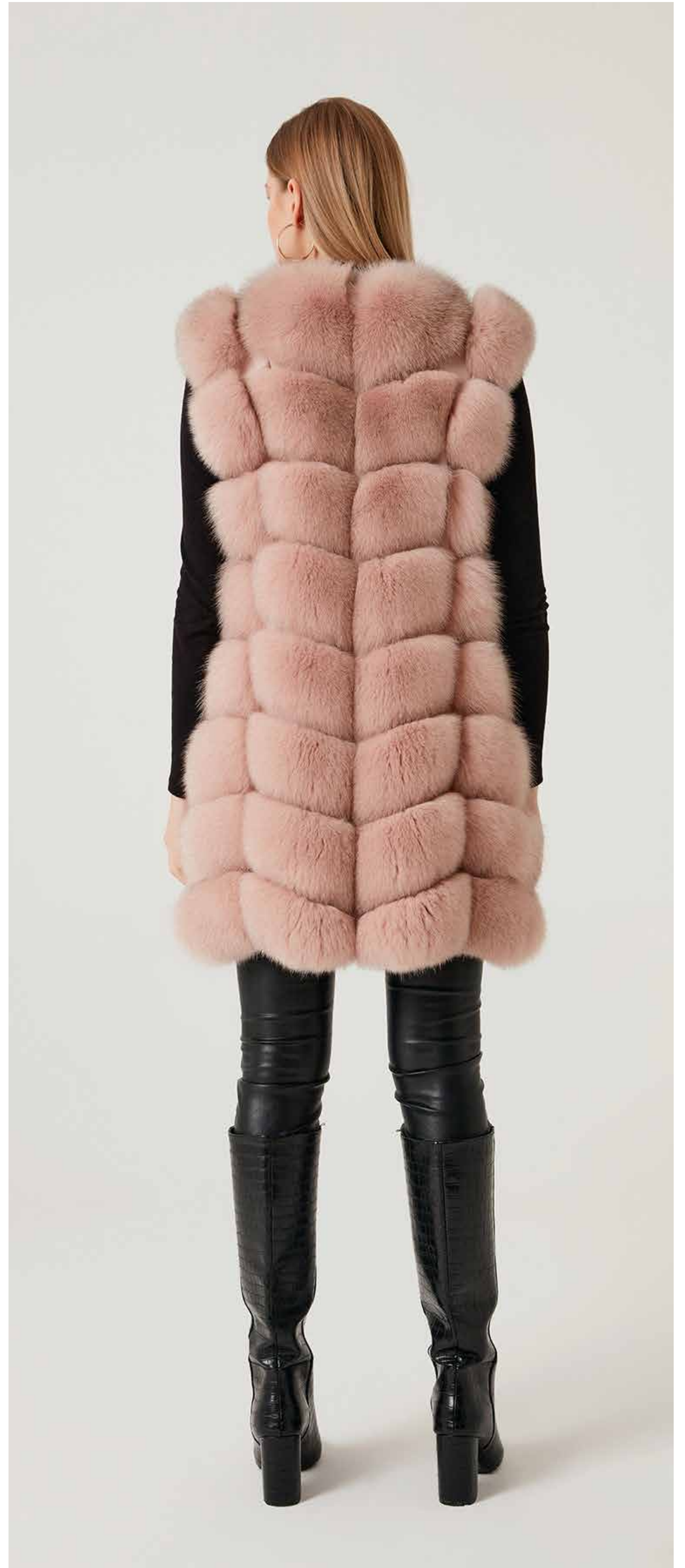
- *Water and Wind Proof Special System*
- *Double-Layer Sewing System*
- *Anti-Wrinkle System*
- *Breatable Fabric*



CAIN Mink

Model: GTX1010-68

- *Water and Wind Proof Special System*
- *Double-Layer Sewing System*
- *Anti-Wrinkle System*
- *Breatable Fabric*



CAIN Fox Fur

Model: GTX1010-68

- *Water and Wind Proof Special System*
- *Double-Layer Sewing System*
- *Anti-Wrinkle System*
- *Breatable Fabric*



CAIN Phyton Lamb

Model: GTX1010-68

- *Water and Wind Proof Special System*
- *Double-Layer Sewing System*
- *Anti-Wrinkle System*
- *Breatable Fabric*



CAIN Chincilla

Model: GTX1010-68

- *Water and Wind Proof Special System*
- *Double-Layer Sewing System*
- *Anti-Wrinkle System*
- *Breatable Fabric*



CAIN Lynx Mink

Model: GTX1010-68

- *Water and Wind Proof Special System*
- *Double-Layer Sewing System*
- *Anti-Wrinkle System*
- *Breatable Fabric*



CAIN Suede Leather

Model: GTX1010-68

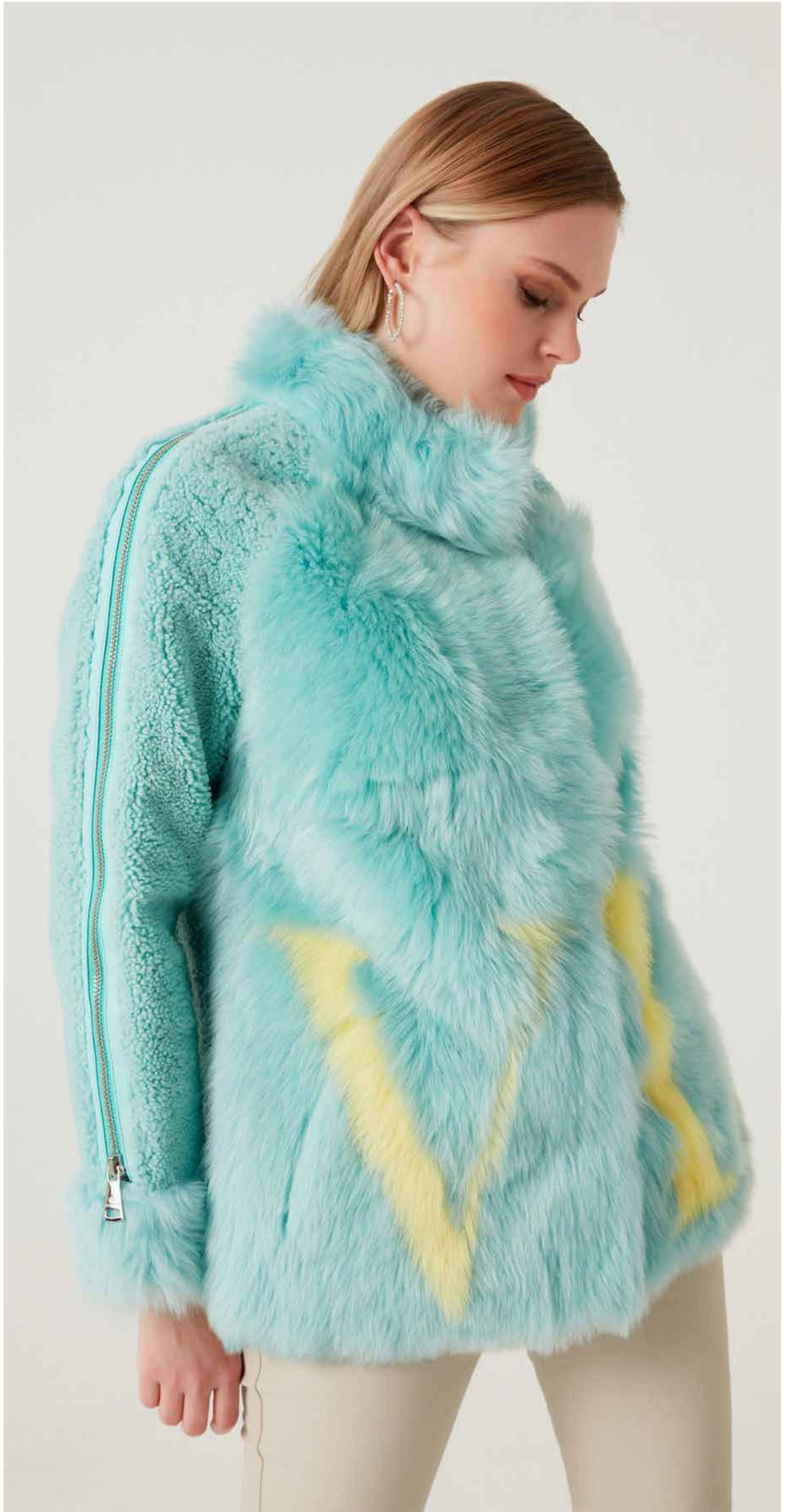
- *Water and Wind Proof Special System*
- *Double-Layer Sewing System*
- *Anti-Wrinkle System*
- *Breatable Fabric*



CAIN Fox-Lamb

Model: GTX1010-68

- *Water and Wind Proof Special System*
- *Double-Layer Sewing System*
- *Anti-Wrinkle System*
- *Breatable Fabric*



CAIN Lamb Fur - Toscana

Model: GTX1010-68

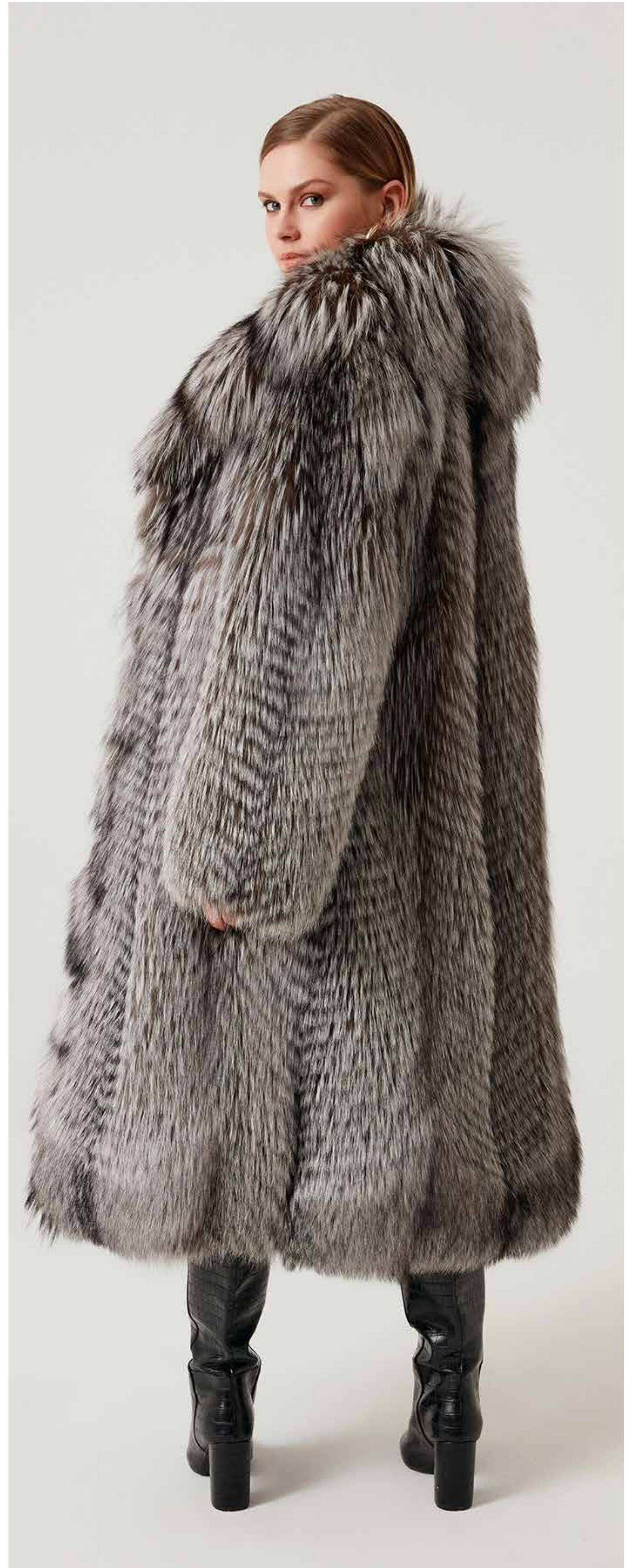
- *Water and Wind Proof Special System*
- *Double-Layer Sewing System*
- *Anti-Wrinkle System*
- *Breatable Fabric*



RENT Mink Fur Coat

Model: GTX1010-68

- *Water and Wind Proof Special System*
- *Double-Layer Sewing System*
- *Anti-Wrinkle System*
- *Breatable Fabric*



CAIN Silver Fox

Model: GTX1010-68

- *Water and Wind Proof Special System*
- *Double-Layer Sewing System*
- *Anti-Wrinkle System*
- *Breatable Fabric*



CAIN Silver Fox - Lamb

Model: GTX1010-68

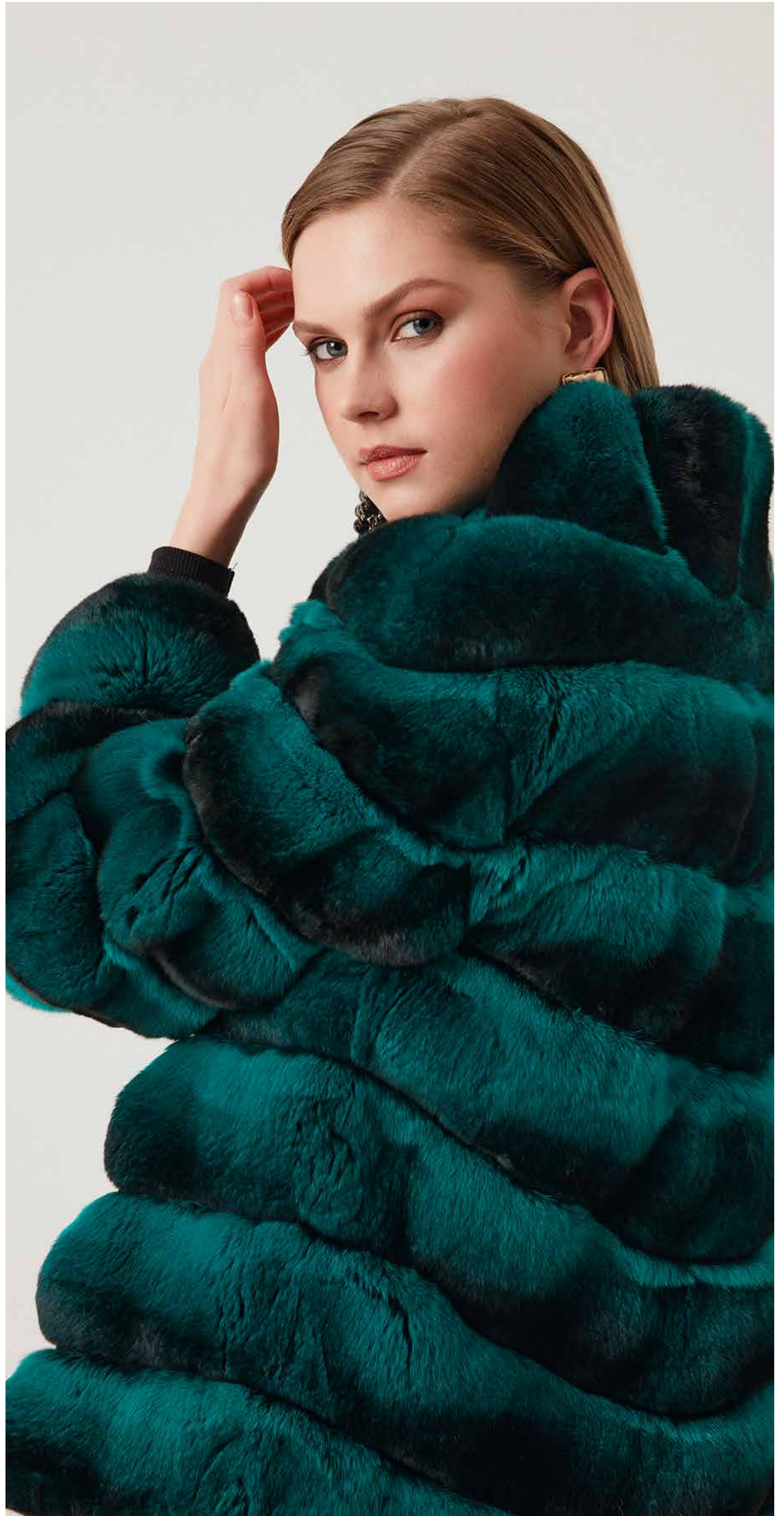
- *Water and Wind Proof Special System*
- *Double-Layer Sewing System*
- *Anti-Wrinkle System*
- *Breatable Fabric*



CAIN Mink - Lynx

Model: GTX1010-68

- *Water and Wind Proof Special System*
- *Double-Layer Sewing System*
- *Anti-Wrinkle System*
- *Breatable Fabric*



CAIN Chincilla

Model: GVO2008-75

- *Water and Wind Proof Special System*
- *Double-Layer Sewing System*
- *Anti-Wrinkle System*
- *Breatable Fabric*



CAIN Chincilla

Model: GTX1010-68

- *Water and Wind Proof Special System*
- *Double-Layer Sewing System*
- *Anti-Wrinkle System*
- *Breatable Fabric*



CAIN Lynx

Model: GTX1010-68

- *Water and Wind Proof Special System*
- *Double-Layer Sewing System*
- *Anti-Wrinkle System*
- *Breatable Fabric*



CAIN Lamb

Model: GTX1010-68

- *Water and Wind Proof Special System*
- *Double-Layer Sewing System*
- *Anti-Wrinkle System*
- *Breatable Fabric*



CAIN Silbver Fox

Model: GTX1010-68

- *Water and Wind Proof Special System*
- *Double-Layer Sewing System*
- *Anti-Wrinkle System*
- *Breatable Fabric*



CAIN Mink

Model: GTX1010-68

- *Water and Wind Proof Special System*
- *Double-Layer Sewing System*
- *Anti-Wrinkle System*
- *Breatable Fabric*



CAIN Mink - PhytonModel: GTX1010-68

- *Water and Wind Proof Special System*
- *Double-Layer Sewing System*
- *Anti-Wrinkle System*
- *Breatable Fabric*



CAIN Mink

Model: GTX1010-68

- *Water and Wind Proof Special System*
- *Double-Layer Sewing System*
- *Anti-Wrinkle System*
- *Breatable Fabric*



CAIN Mink - Silver Fox - Mink

Model: GTX1010-68

- *Water and Wind Proof Special System*
- *Double-Layer Sewing System*
- *Anti-Wrinkle System*
- *Breatable Fabric*



CAIN Mink Chincilla

Model: GTX1010-68

- *Water and Wind Proof Special System*
- *Double-Layer Sewing System*
- *Anti-Wrinkle System*
- *Breatable Fabric*



CAIN Mink-Phyton

Model: GTX1010-68

- *Water and Wind Proof Special System*
- *Double-Layer Sewing System*
- *Anti-Wrinkle System*
- *Breatable Fabric*



CAIN Lamb Fur - Silver Fox

Model: GTX1010-68

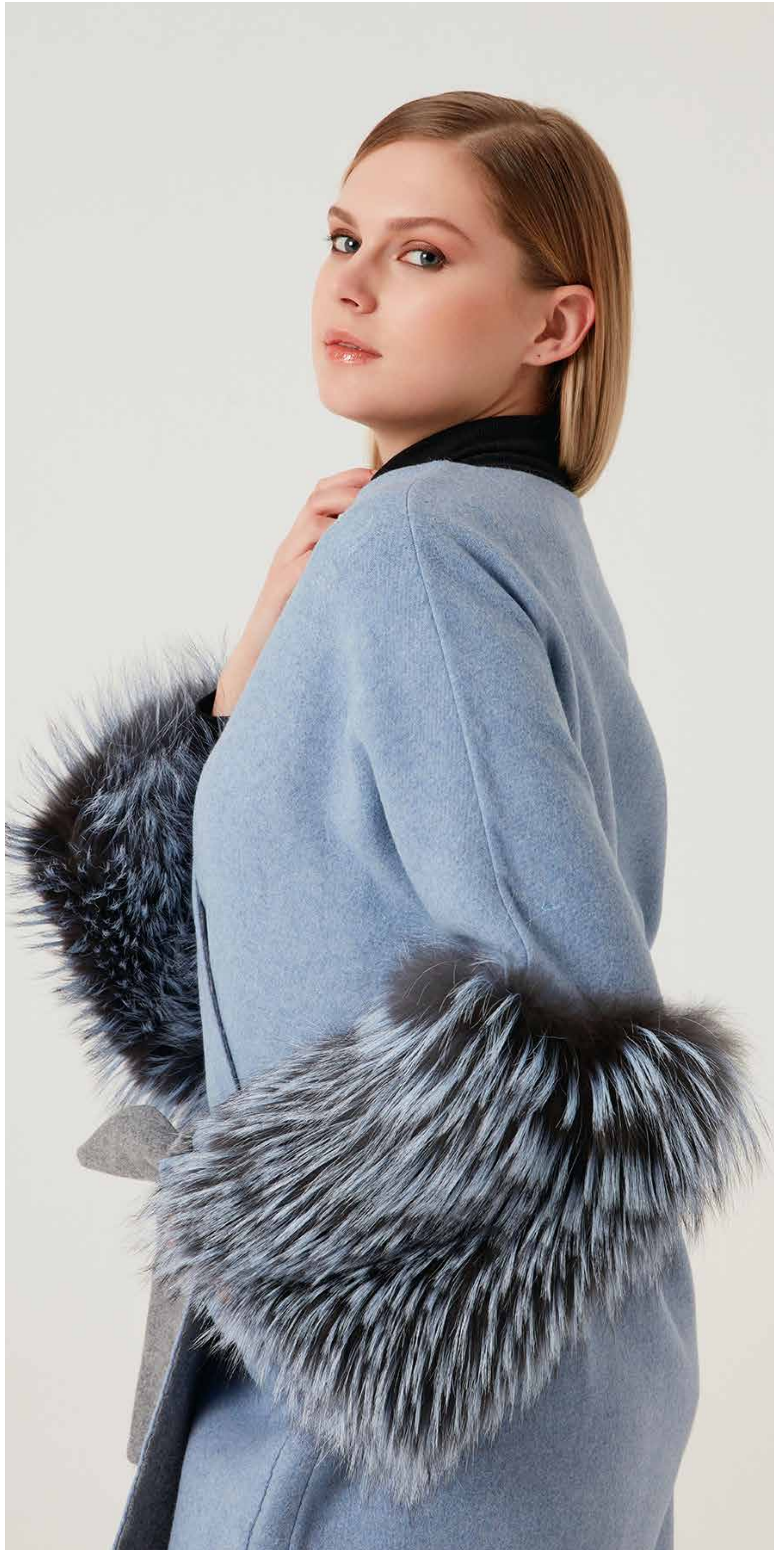
- *Water and Wind Proof Special System*
- *Double-Layer Sewing System*
- *Anti-Wrinkle System*
- *Breatable Fabric*



CAIN Chincilla

Model: GTX1010-68

- *Water and Wind Proof Special System*
- *Double-Layer Sewing System*
- *Anti-Wrinkle System*
- *Breatable Fabric*



CAIN Silver Fox

Model: GTX1010-68

- *Water and Wind Proof Special System*
- *Double-Layer Sewing System*
- *Anti-Wrinkle System*
- *Breatable Fabric*



CAIN Lynx- Mink

Model: GTX1010-68

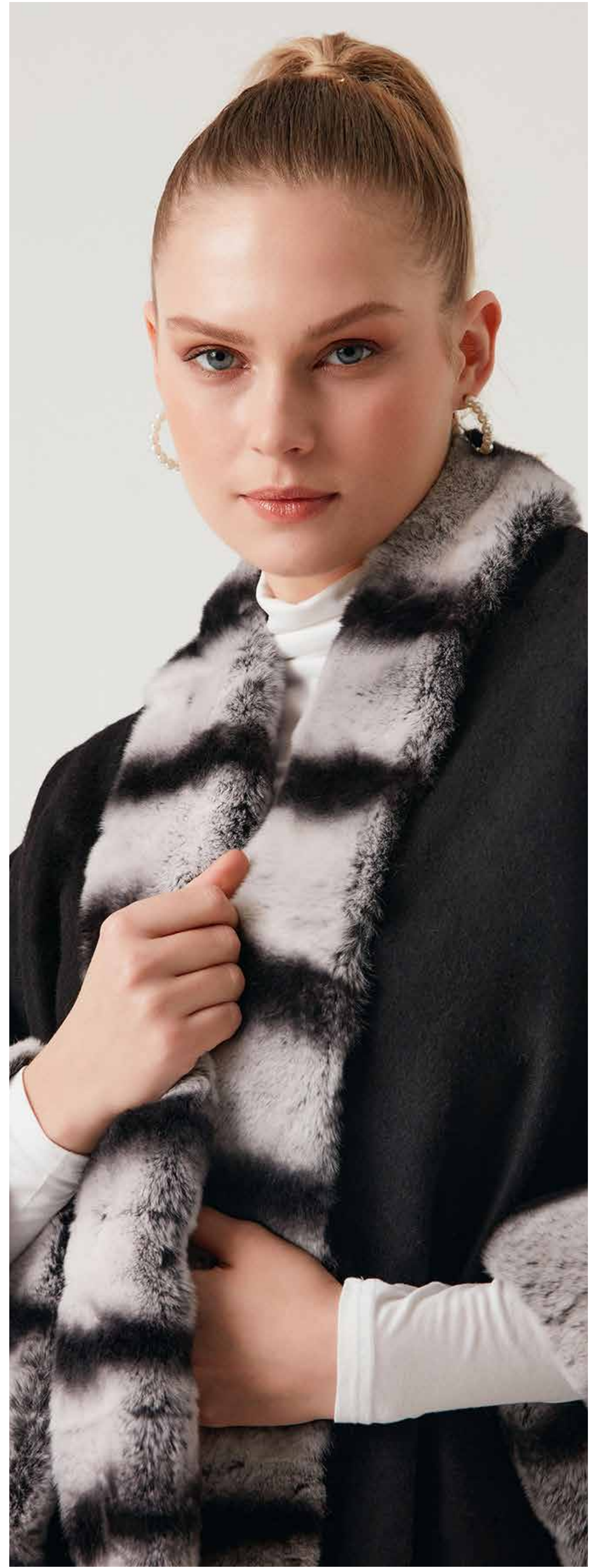
- *High Quality Mink*
- *FurDouble-Layer Sewing System*
- *Anti-Wrinkle System*
- *Breatable Fabric*



CAIN Phyton - Shadow Fox

Model: GTX1010-68

- *High Quality Fox Fur*
- *Double-Layer Sewing System*
- *Anti-Wrinkle System*
- *Breatable Fabric*



ZETON Rex Rabbit Fur Cashmere Poncho

Model: GTX0122-85

- *High Quality Rex Rabbit Fur*
- *Double-Layer Sewing System*
- *Anti-Wrinkle System*
- *Breatable Fabric*



POKA Fox Fur Cashmere Poncho

Model: GTX0500

- *High Quality Fox Fur*
- *Double-Layer Sewing System*
- *Anti-Wrinkle System*
- *Breatable Fabric*



WOI Mink Fur Shawl

Model: GTX1010-68

- *High Quality Mink Fur*
- *Double-Layer Sewing System*
- *Anti-Wrinkle System*
- *Breatable Fabric*



POWI Mink Fur Shawl

Model: GTX1010-68

- *High Quality Mink Fur*
- *Double-Layer Sewing System*
- *Anti-Wrinkle System*
- *Breatable Fabric*



CAIN Sable Mink

Model: GTX1010-68

- *High Quality Mink Fur*
- *Double-Layer Sewing System*
- *Anti-Wrinkle System*
- *Breatable Fabric*



CAIN Lynx

Model: GTX1010-68

- *High Quality Lynx Fur*
- *Double-Layer Sewing System*
- *Anti-Wrinkle System*
- *Breatable Fabric*



CAIN Chincilla

Model: GTX1010-68

- *Water and Wind Proof Special System*
- *Double-Layer Sewing System*
- *Anti-Wrinkle System*
- *Breatable Fabric*



CAIN Chincilla

Model: GTX1010-68

- *Water and Wind Proof Special System*
- *Double-Layer Sewing System*
- *Anti-Wrinkle System*
- *Breatable Fabric*



GRON Sable Fur Coat

Model: RIN-KT-356-125

- *Sable Fur*
- *Extremely soft and Lightweight*
- *Phyton Skin Belt*
- *Button Closure*



CAIN Shearling and Fox Fur Coat

Model: RVO-19-271

- *Shearling Fur and Baby Cashmere*
- *Fox Fur Collar*
- *Cashmere Belt*
- *Satin Lining*



HENRI Sable Fur Coat

Model: RVO-20-119A

- *Sable Fur Detailed*
- *Baby Cashmere Fabric*
- *Cashmere Belt*
- *Extremely soft and Lightweight*



ALBER Mink Fur Coat

Model: RVO-17-351

- *Mink Fur Detailed*
- *Baby Cashmere Fabric*
- *Cashmere Belt*
- *Extremely soft and Lightweight*



BRUNNER Chincilla Fur Coat

Model: RVO-18-251

- *Chincilla Fur Detailed*
- *Baby Cashmere Fabric*
- *Cashmere Belt*
- *Extremely Soft and Lightweight*



LAVIA Blue Fox Alpaca Coat

Model: GTX-0015T

- *Water and Wind Proof Special System*
- *Double-Layer Sewing System*
- *Anti-Wrinkle System*
- *Breatable Fabric*



ROVI- Chincilla Fur Alpaca Coat

Model: GTX-0061-110

- *Chincilla Fur Detailed*
- *Alpaca Fabric*
- *Leather Belt*
- *Extremely Soft and Lightweight*



RODE- Fox Fur Alpaca Coat

Model: GTX-0061-110

- *Fox Fur Collar*
- *Alpaca Fabric*
- *Leather Belt*
- *Extremely Soft and Lightweight*



YOA Alcantre Mink Fur Overcoat

Model: RIN-KT342-119

- *Alcantre & Mink Fur*
- *Double-Layer Sewing System*
- *Anti-Wrinkle System*
- *Breatable Fabric*



WEL Genuine Leather Jacket

Model: MEL-1007

- *Water and Wind Proof Special System*
- *Double-Layer Sewing System*
- *Anti-Wrinkle System*
- *Breatable Fabric*



TUPI Cashmere Overcoat

Model: RVO-22-704

- *Water and Wind Proof Special System*
- *Double-Layer Sewing System*
- *Anti-Wrinkle System*
- *Breatable Fabric*



FEW ChincillaDetailed Cashmere Coat

Model: RVO-22-706

- *Water and Wind Proof Special System*
- *Double-Layer Sewing System*
- *Anti-Wrinkle System*
- *Breatable Fabric*



TASH Cashmere Coat

Model: RVO-22-712

- Cashmere
- Double-Layer Sewing System
- Anti-Wrinkle System
- Breathable Fabric



CAIN Mink

Model: RVO-22-729

- Cashmere & Mink Fur
- Double-Layer Sewing System
- Anti-Wrinkle System
- Breathable Fabric



HODAN Chincilla Fur Coat

Model: GVO1126-60

- *Chincilla Fur & Satin Lining*
- *Double-Layer Sewing System*
- *Anti-Wrinkle System*
- *Breatable Fabric*



LOBO Chincilla and Cashmere Fur Coat

Model: GVO2421H-90

- *Chincilla Fur & Satin Lining*
- *Double-Layer Sewing System*
- *Anti-Wrinkle System*
- *Breatable Fabric*



VIOLA Rex Chinchilla Fur Coat

Model: GRO0187R-90

- *High Quality Rex Rabbit Fur*
- *Double-Layer Sewing System*
- *Anti-Wrinkle System*
- *Breatable Fabric*



SALINA Rex Chinchilla Fur Coat

Model: GRO-0248R

- *High Quality Rex Rabbit Fur*
- *Double-Layer Sewing System*
- *Anti-Wrinkle System*
- *Breatable Fabric*



GREL Rex Chinchilla Fur Coat

Model: GRO0187R-90

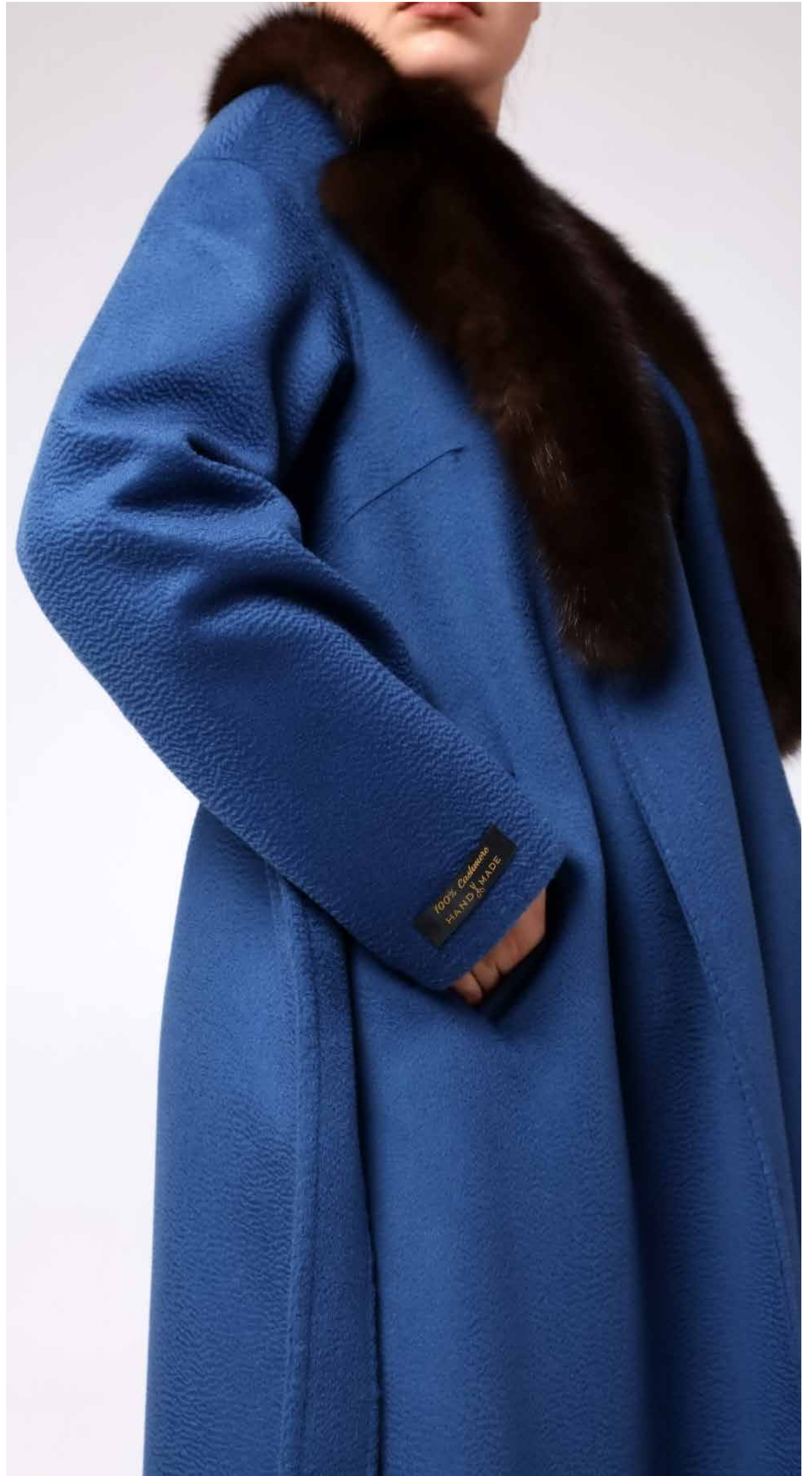
- *High Quality Rex Rabbit Fur*
- *Double-Layer Sewing System*
- *Anti-Wrinkle System*
- *Breatable Fabric*



CAIN Chincilla

Model: GVO2450-70

- *High Quality Chincilla Fur*
- *Double-Layer Sewing System*
- *Anti-Wrinkle System*
- *Breatable Fabric*



VONKA Sable Detailed Cashmere Overcoat

Model: MOR-3051

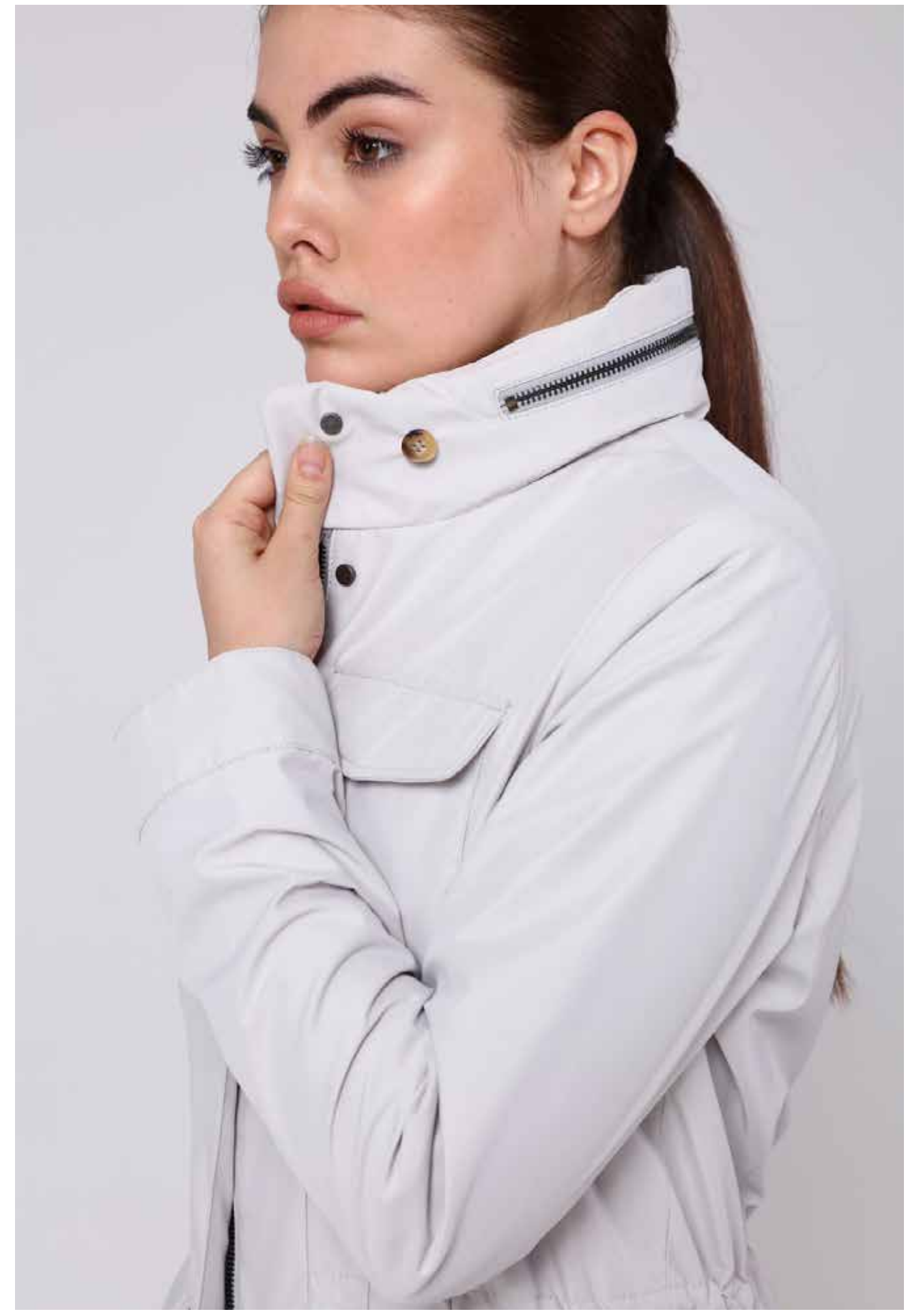
- *High Quality Sable Fur*
- *Double-Layer Sewing System*
- *Anti-Wrinkle System*
- *Breatable Fabric*



CLARA Cashmere Overcoat

Model: GTX-1680-105

- *Cashmere Fabric*
- *Double-Layer Sewing System*
- *Anti-Wrinkle System*
- *Breatable Fabric*



CAIN Genuine Leather Jacket

Model: GTX1010-68

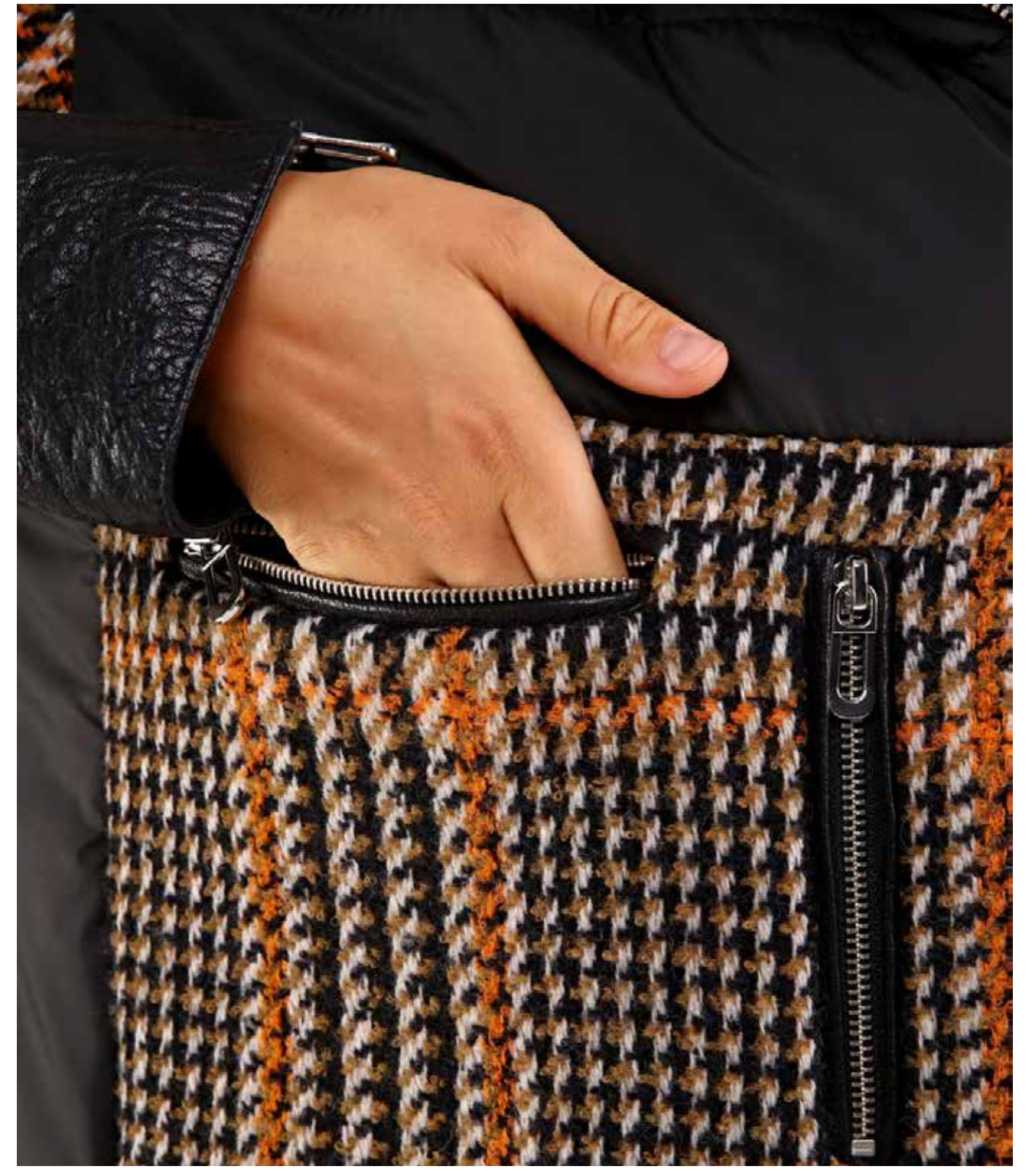
- *Water and Wind Proof Special System*
- *Double-Layer Sewing System*
- *Anti-Wrinkle System*
- *Breatable Fabric*



FIA Suede Rex Fur Coat

Model: AKI-FB1568Ç-T

- *Leather Rex Fur Detailed Hoodie*
- *Double-Layer Sewing System*
- *Anti-Wrinkle System*
- *Breatable Fabric*



CAIN Mink Fur Detailed Alpaca Coat

Model: ALB-7788H-65

- *Water and Wind Proof Special System*
- *Double-Layer Sewing System*
- *Anti-Wrinkle System*
- *Breatable Fabric*



CAIN Phytan Mink Detailed Overcoat

Model: AYVZ-5061-A

- *Mink and Phytan Detailed*
- *Double-Layer Sewing System*
- *Anti-Wrinkle System*
- *Breatable Fabric*



CAIN Rex Fur Alpaca Coat

Model: GTX0061-110

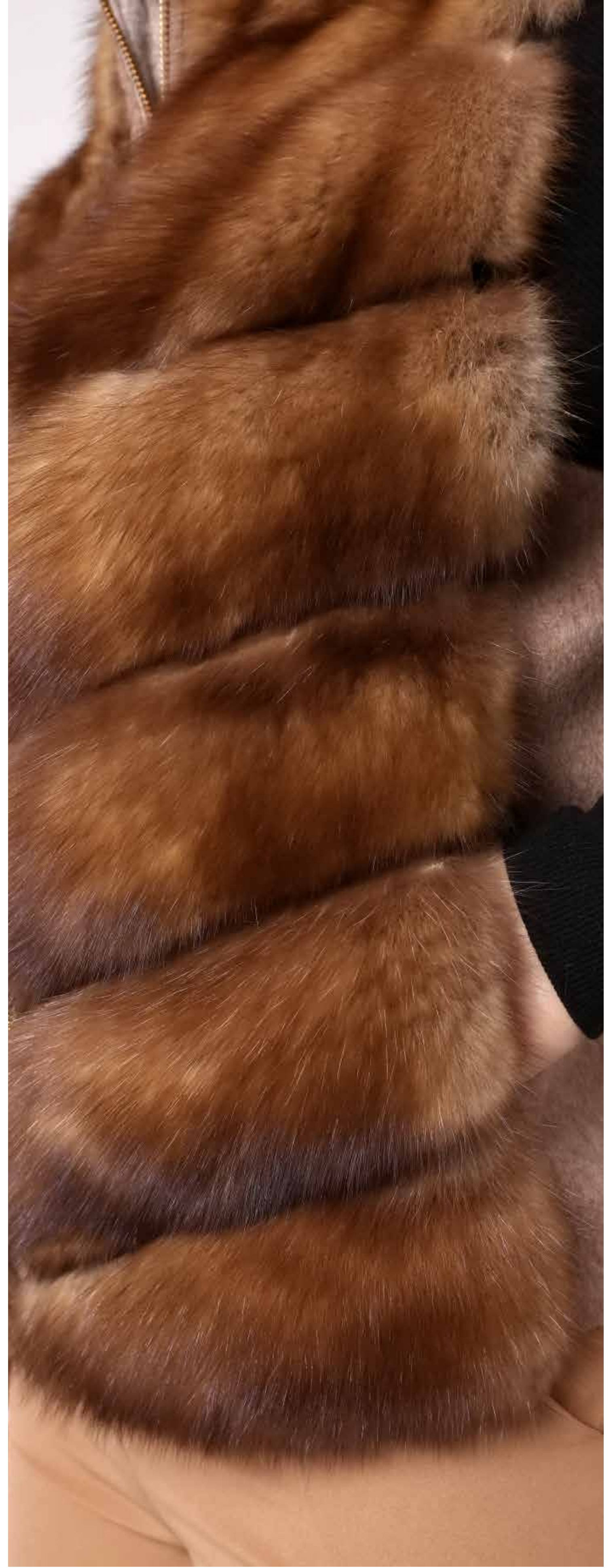
- *Suede and Chincilla Fur Detailed*
- *Double-Layer Sewing System*
- *Anti-Wrinkle System*
- *Breatable Fabric*



WOL Rex Fur Detailed Cashmere Coat

Model: GTX9050-110

- *Water and Wind Proof Special System*
- *Double-Layer Sewing System*
- *Anti-Wrinkle System*
- *Breatable Fabric*



TORA Sable Fur Vest

Model: GVO2445-52

- *High Quality Sable Fur*
- *Double-Layer Sewing System*
- *Anti-Wrinkle System*
- *Breatable Fabric*



JAN Fox Fur Detailed Jean Coat

Model: M20-70

- *Water and Wind Proof Special System*
- *Double-Layer Sewing System*
- *Anti-Wrinkle System*
- *Breatable Fabric*



ROBI Leather Detailed Cashmere Coat

Model: MEL-49

- *Cashmere & Leather*
- *Double-Layer Sewing System*
- *Anti-Wrinkle System*
- *Breatable Fabric*



ORY Rex Fur Coat

Model: MKU-MK9178

- *High Quality Rex Fur*
- *Double-Layer Sewing System*
- *Anti-Wrinkle System*
- *Breatable Fabric*



CAIN Fox

Model: MLS-143

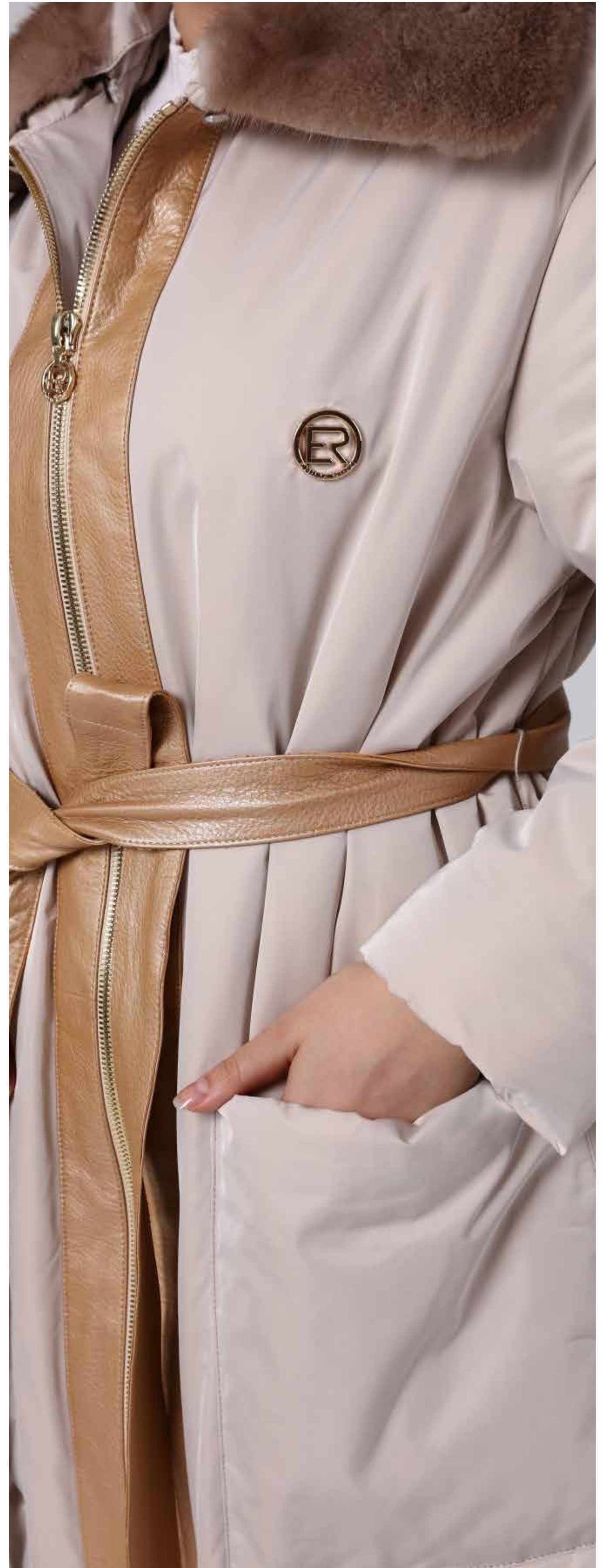
- *Cashmere & Fox Fur Detailed*
- *Double-Layer Sewing System*
- *Anti-Wrinkle System*
- *Breatable Fabric*



BOF Lamb Fur Coat

Model: PLTNYM-19532

- *Lamb Fur & Leather*
- *Double-Layer Sewing System*
- *Anti-Wrinkle System*
- *Breatable Fabric*



CHI Mink Fur Coat

Model: RIN-KMS-1002-93

- *Mink Fur Collar & Waterproof*
- *Double-Layer Sewing System*
- *Anti-Wrinkle System*
- *Breatable Fabric*



LAWYA Cashmere Coat

Model: MEL-3219

- *Water and Wind Proof Special System*
- *Double-Layer Sewing System*
- *Anti-Wrinkle System*
- *Breatable Fabric*



NEF Cashmere Coat

Model: RVO-20-175

- *Water and Wind Proof Special System*
- *Double-Layer Sewing System*
- *Anti-Wrinkle System*
- *Breatable Fabric*



BON Cashmere Mink Fur Coat

Model: RVO-19-103

- *Cashmere & Mink Fur Detailed*
- *Double-Layer Sewing System*
- *Anti-Wrinkle System*
- *Breatable Fabric*



VAN Cashmere Fox Frost Coat

Model: RVO-19-264

- *Cashmere & Fox Frost*
- *Double-Layer Sewing System*
- *Anti-Wrinkle System*
- *Breatable Fabric*



CAM Cashmere Mink Fur Coat

Model: RVO-20-165

- *Cashmere & Mink Fur Detailed*
- *Double-Layer Sewing System*
- *Anti-Wrinkle System*
- *Breatable Fabric*



HERK Chincilla Detailed Wool Overcoat

Model: GTO-HRK3034-110

- *Wool & Chincilla*
- *Double-Layer Sewing System*
- *Anti-Wrinkle System*
- *Breatable Fabric*



ALP Genuine Leather Jacket

Model: RVO-20-175C

- *Alpaca Fabric*
- *Double-Layer Sewing System*
- *Anti-Wrinkle System*
- *Breatable Fabric*



RODI Mink Fur Detailed Cashmere Overcoat

Model: RVO-20-198

- *Cashmere & Mink Fur*
- *Double-Layer Sewing System*
- *Anti-Wrinkle System*
- *Breatable Fabric*



LOC Cashmere Overcoat

Model: RVO-20-198

- *Cashmere Fabric*
- *Double-Layer Sewing System*
- *Anti-Wrinkle System*
- *Breatable Fabric*



BURG Chincilla Fur Detailed Cashmere Coat

Model: RVO-20-210

- *Chincilla & Cashmere*
- *Double-Layer Sewing System*
- *Anti-Wrinkle System*
- *Breatable Fabric*



LIPA Mink Fur Detailed Cashmere Coat

Model: RVO-21-154

- Cashmere & Mink Fur
- Double-Layer Sewing System
- Anti-Wrinkle System
- Breathable Fabric



TALE Mink Fur Detailed Cashmere Overcoat

Model: RVO-21-156A

- *Mink Fur & Cashmere*
- *Double-Layer Sewing System*
- *Anti-Wrinkle System*
- *Breatable Fabric*



REAR Fox Fur Detailed Shearling Coat

Model: AYVZ-5050

- *Shearling & Fox Fur*
- *Double-Layer Sewing System*
- *Anti-Wrinkle System*
- *Breatable Fabric*



CAIN Lamb

Model: GTX1010-68

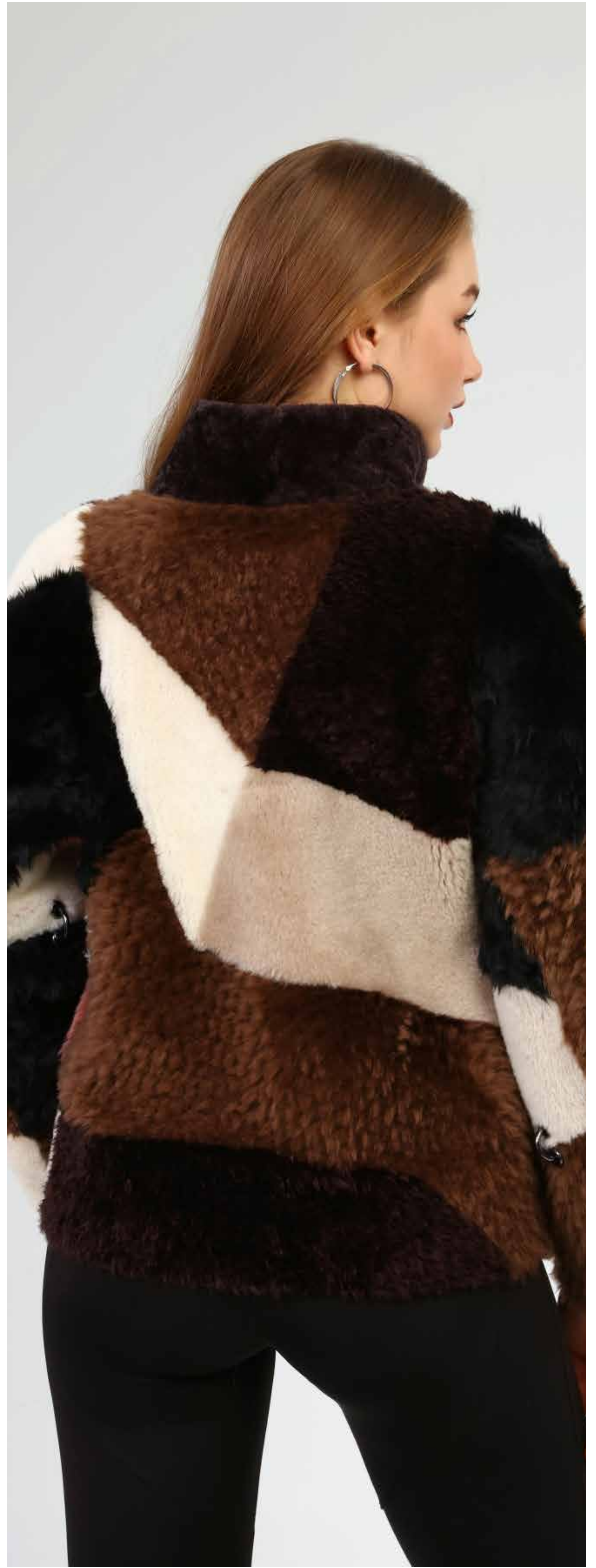
- *Water and Wind Proof Special System*
- *Double-Layer Sewing System*
- *Anti-Wrinkle System*
- *Breatable Fabric*



CAIN Lamb

Model: GTX1010-68

- *Water and Wind Proof Special System*
- *Double-Layer Sewing System*
- *Anti-Wrinkle System*
- *Breatable Fabric*



CAIN Lamb

Model: GTX1010-68

- *Water and Wind Proof Special System*
- *Double-Layer Sewing System*
- *Anti-Wrinkle System*
- *Breatable Fabric*



CAIN Lamb Fox

Model: GTX1010-68

- *Water and Wind Proof Special System*
- *Double-Layer Sewing System*
- *Anti-Wrinkle System*
- *Breatable Fabric*



CAIN Fox-Lamb

Model: GTX1010-68

- *Water and Wind Proof Special System*
- *Double-Layer Sewing System*
- *Anti-Wrinkle System*
- *Breatable Fabric*



CAIN Lamb-Fox

Model: GTX1010-68

- *Water and Wind Proof Special System*
- *Double-Layer Sewing System*
- *Anti-Wrinkle System*
- *Breatable Fabric*



CAIN Genuine Leather Jacket

Model: GTX1010-68

- *Water and Wind Proof Special System*
- *Double-Layer Sewing System*
- *Anti-Wrinkle System*
- *Breatable Fabric*



TOU Fox Fur Detailed Coat

Model: ETA1010-90

- *Water and Wind Proof Special System*
- *Double-Layer Sewing System*
- *Anti-Wrinkle System*
- *Breatable Fabric*



CAIN Rex

Model: GTX1010-68

- *Water and Wind Proof Special System*
- *Double-Layer Sewing System*
- *Anti-Wrinkle System*
- *Breatable Fabric*



CAIN rex

Model: GTX1010-68

- *Water and Wind Proof Special System*
- *Double-Layer Sewing System*
- *Anti-Wrinkle System*
- *Breatable Fabric*



CAIN Genuine Leather Jacket

Model: GTX1010-68

- *Water and Wind Proof Special System*
- *Double-Layer Sewing System*
- *Anti-Wrinkle System*
- *Breatable Fabric*



WORA Lamb Coat

Model: GTX1010-68

- *Water and Wind Proof Special System*
- *Double-Layer Sewing System*
- *Anti-Wrinkle System*
- *Breatable Fabric*



CAIN Chincilla

Model: GTX1010-68

- *Water and Wind Proof Special System*
- *Double-Layer Sewing System*
- *Anti-Wrinkle System*
- *Breatable Fabric*



CAIN Silver Fox

Model: GTX1010-68

- *Water and Wind Proof Special System*
- *Double-Layer Sewing System*
- *Anti-Wrinkle System*
- *Breatable Fabric*



CAIN Genuine Leather Jacket

Model: GTX1010-68

- *Water and Wind Proof Special System*
- *Double-Layer Sewing System*
- *Anti-Wrinkle System*
- *Breatable Fabric*



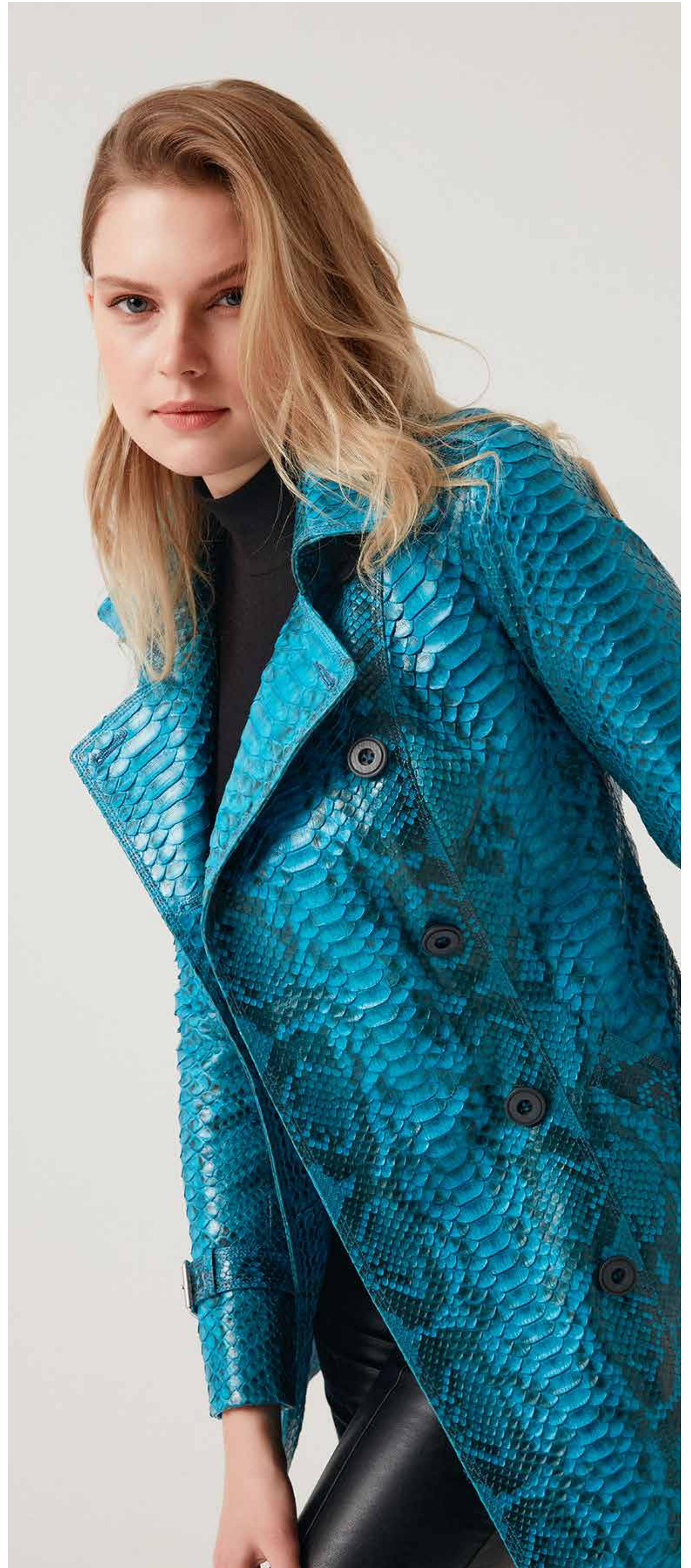
CAIN Genuine Leather Jacket

Model: GTX1010-68

- *Water and Wind Proof Special System*
- *Double-Layer Sewing System*
- *Anti-Wrinkle System*
- *Breatable Fabric*

A woman with blonde hair is shown from the back, wearing a teal-colored leather jacket with a crocodile or alligator skin texture. The jacket has a notched lapel, a central seam, and buckled cuffs. The background is a plain, light-colored wall.

leather
phyton
crocodile



BLAU Genuine Phyton Skin Jacket

Model: KAR511

- *Phyton Skin*
- *Double-Layer Sewing System*
- *Anti-Wrinkle System*



SERP Phyton and Chincilla Fur Jacket

Model: MORPITONY

- *Phyton & Chincilla*
- *Double-Layer Sewing System*
- *Anti-Wrinkle System*
- *Breatable Fabric*



CAIN Genuine Leather Jacket

Model: GTX1010-68

- *Water and Wind Proof Special System*
- *Double-Layer Sewing System*
- *Anti-Wrinkle System*
- *Breatable Fabric*



WALK Patchwork Phyton and Suede Detailed Overcoat

Model: GTX1010-68

- *Phyton & Suede leather*
- *Double-Layer Sewing System*
- *Anti-Wrinkle System*



CAIN Genuine Leather Jacket

Model: GTX1010-68

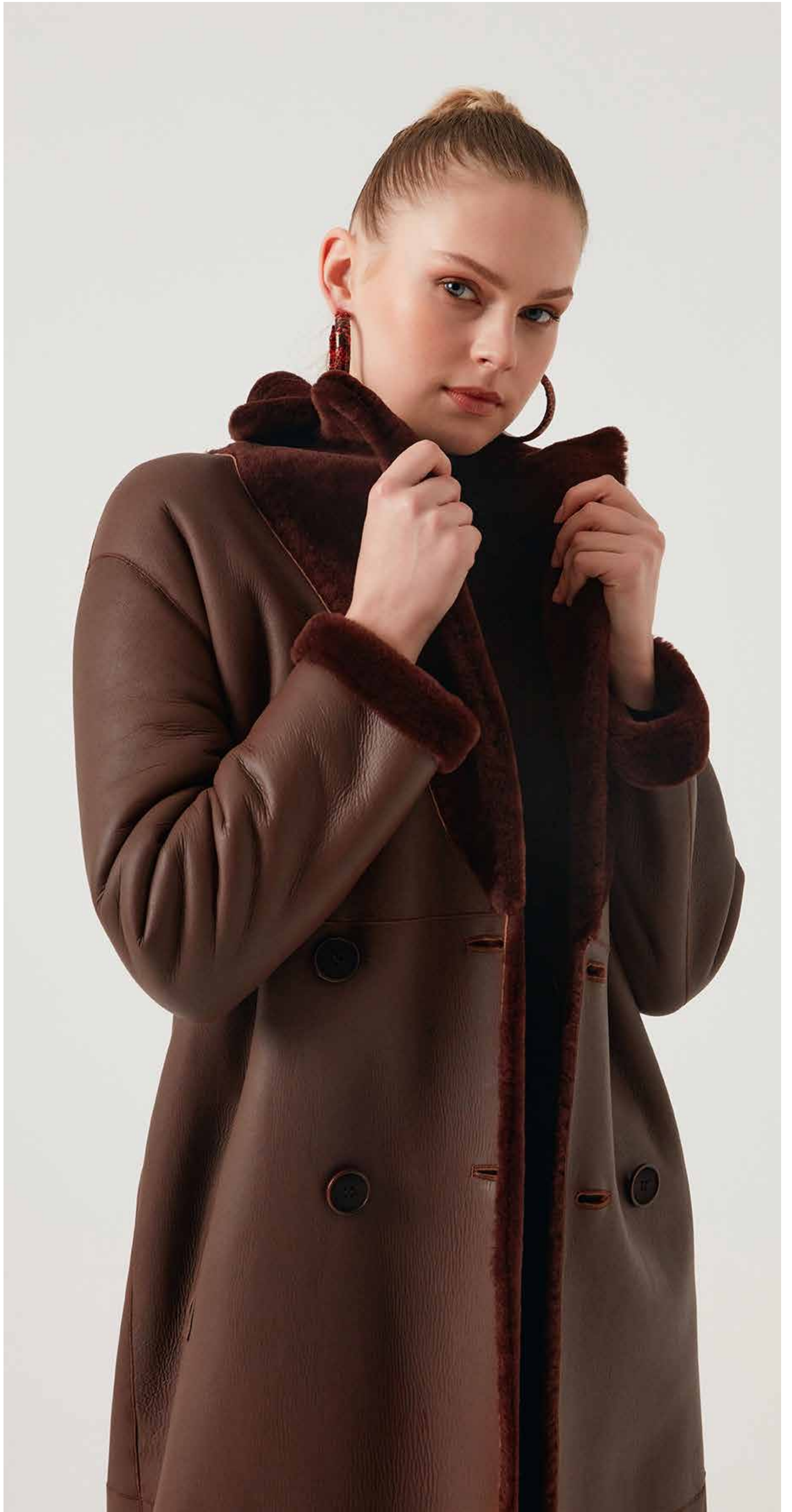
- *Water and Wind Proof Special System*
- *Double-Layer Sewing System*
- *Anti-Wrinkle System*
- *Breatable Fabric*



CAIN Genuine Leather Jacket

Model: GTX1010-68

- *Water and Wind Proof Special System*
- *Double-Layer Sewing System*
- *Anti-Wrinkle System*
- *Breatable Fabric*



CAIN Genuine Leather Jacket

Model: GTX1010-68

- *Water and Wind Proof Special System*
- *Double-Layer Sewing System*
- *Anti-Wrinkle System*
- *Breatable Fabric*



CAIN Genuine Leather Jacket

Model: GTX1010-68

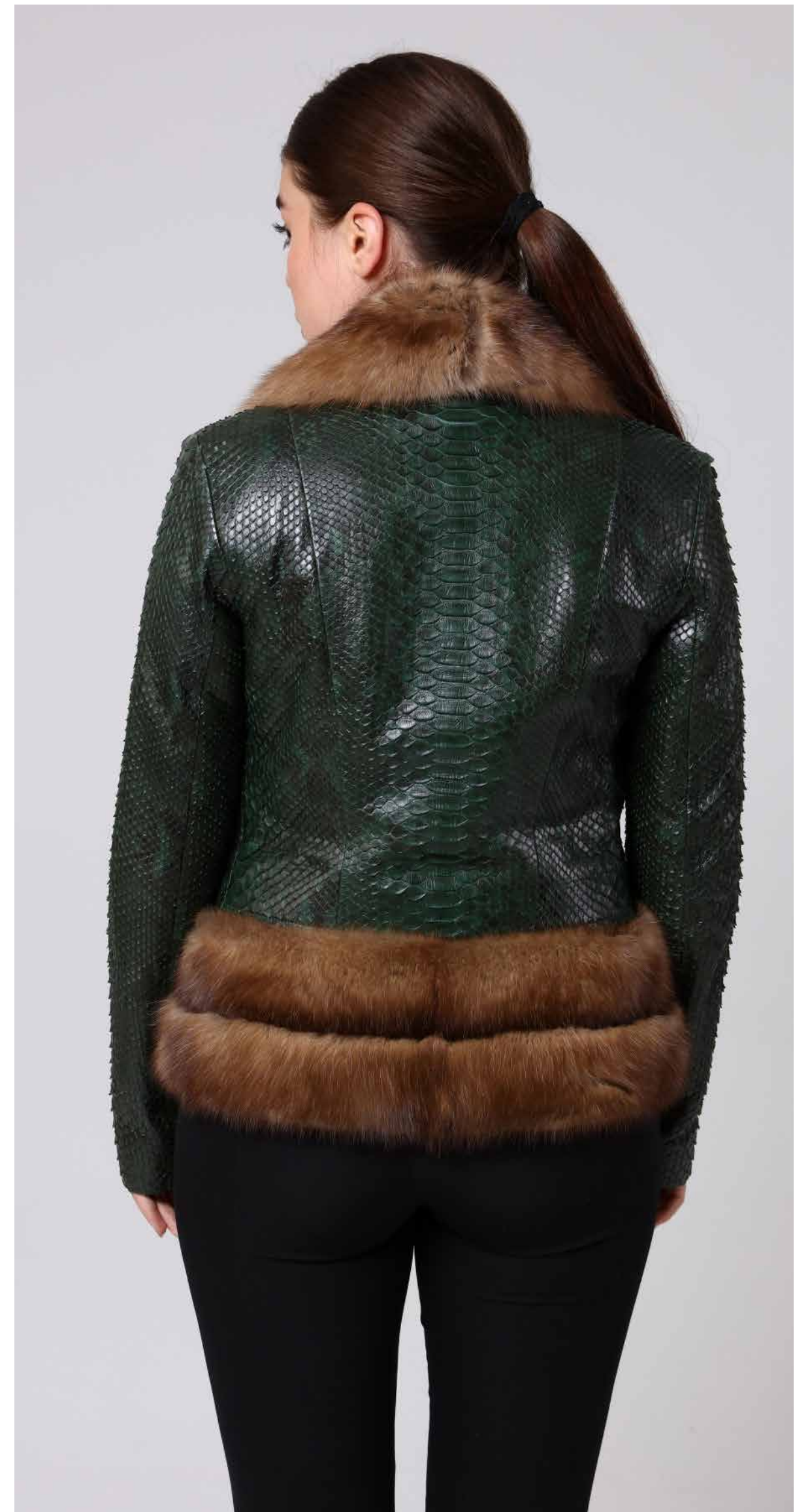
- *Water and Wind Proof Special System*
- *Double-Layer Sewing System*
- *Anti-Wrinkle System*
- *Breatable Fabric*



CAIN Genuine Leather Jacket

Model: GTX1010-68

- *Water and Wind Proof Special System*
- *Double-Layer Sewing System*
- *Anti-Wrinkle System*
- *Breatable Fabric*



CAIN Sable

Model: GTX1010-68

- *Water and Wind Proof Special System*
- *Double-Layer Sewing System*
- *Anti-Wrinkle System*
- *Breatable Fabric*



CAIN Genuine Leather Jacket

Model: GTX1010-68

- *Water and Wind Proof Special System*
- *Double-Layer Sewing System*
- *Anti-Wrinkle System*
- *Breatable Fabric*



CAIN Genuine Leather Jacket

Model: GTX1010-68

- *Water and Wind Proof Special System*
- *Double-Layer Sewing System*
- *Anti-Wrinkle System*
- *Breatable Fabric*



CAIN Genuine Leather Jacket

Model: GTX1010-68

- *Water and Wind Proof Special System*
- *Double-Layer Sewing System*
- *Anti-Wrinkle System*
- *Breatable Fabric*



CAIN Genuine Leather Jacket

Model: GTX1010-68

- *Water and Wind Proof Special System*
- *Double-Layer Sewing System*
- *Anti-Wrinkle System*
- *Breatable Fabric*



CAIN Genuine Leather Jacket

Model: GTX1010-68

- *Water and Wind Proof Special System*
- *Double-Layer Sewing System*
- *Anti-Wrinkle System*
- *Breatable Fabric*



CAIN Genuine Leather Jacket

Model: GTX1010-68

- *Water and Wind Proof Special System*
- *Double-Layer Sewing System*
- *Anti-Wrinkle System*
- *Breatable Fabric*



CAIN Genuine Leather Jacket

Model: GTX1010-68

- *Water and Wind Proof Special System*
- *Double-Layer Sewing System*
- *Anti-Wrinkle System*
- *Breatable Fabric*



CAIN Genuine Leather Jacket

Model: GTX1010-68

- *Water and Wind Proof Special System*
- *Double-Layer Sewing System*
- *Anti-Wrinkle System*
- *Breatable Fabric*



CAIN Genuine Leather Jacket

Model: GTX1010-68

- *Water and Wind Proof Special System*
- *Double-Layer Sewing System*
- *Anti-Wrinkle System*
- *Breatable Fabric*



CAIN Genuine Leather Jacket

Model: GTX1010-68

- *Water and Wind Proof Special System*
- *Double-Layer Sewing System*
- *Anti-Wrinkle System*
- *Breatable Fabric*



CAIN Genuine Leather Jacket

Model: GTX1010-68

- *Water and Wind Proof Special System*
- *Double-Layer Sewing System*
- *Anti-Wrinkle System*
- *Breatable Fabric*



CAIN Fox

Model: GTX1010-68

- *Water and Wind Proof Special System*
- *Double-Layer Sewing System*
- *Anti-Wrinkle System*
- *Breatable Fabric*



CAIN Lamb Fur Coat

Model: GTX1010-68

- *Water and Wind Proof Special System*
- *Double-Layer Sewing System*
- *Anti-Wrinkle System*
- *Breatable Fabric*



CAIN Fox

Model: GTX1010-68

- *Water and Wind Proof Special System*
- *Double-Layer Sewing System*
- *Anti-Wrinkle System*
- *Breatable Fabric*



CAIN Fox Fur

Model: GTX1010-68

- *Water and Wind Proof Special System*
- *Double-Layer Sewing System*
- *Anti-Wrinkle System*
- *Breatable Fabric*



PEER Chinchilla Detail Women Sweater

Model: GTO0322-75

- %100 Cotton Knitwear
- Chinchilla Fur Detailed
- Double-Layer Sewing System
- Anti-Wrinkle System



MILD Gray Chinchilla Fur Knitwear Set

Model: GTOKKZK2522

- %100 Cotton Knitwear
- Chinchilla Fur Detailed
- Double-Layer Sewing System
- Anti-Wrinkle System



MILD Gray Chinchilla Fur Knitwear Set

Model: GTOKKZK2522

- %100 Cotton Knitwear
- Chinchilla Fur Detailed
- Double-Layer Sewing System
- Anti-Wrinkle System



MILD Gray Chinchilla Fur Knitwear Set

Model: GTOKKZK2522

- *Water and Wind Proof Special System*
- *Double-Layer Sewing System*
- *Anti-Wrinkle System*
- *Breatable Fabric*



MOSSY Fox Fur Shawl
Model: ALM-3LÜBOLERO



MOSSY Fox Fur Shawl
Model: ALM-3LÜBOLERO



MOSSY Fox Fur Shawl
Model: ALM-3LÜBOLERO



FOUR Fox Fur Shawl
Model: ALM-4LÜBOLERO



CAIN Rex

Model: GTX1010-68

- *Water and Wind Proof Special System*
- *Double-Layer Sewing System*
- *Anti-Wrinkle System*
- *Breatable Fabric*



CAIN Chincilla

Model: GTX1010-68

- *Water and Wind Proof Special System*
- *Double-Layer Sewing System*
- *Anti-Wrinkle System*
- *Breatable Fabric*



CAIN Genuine Leather Jacket

Model: GTX1010-68

- *Water and Wind Proof Special System*
- *Double-Layer Sewing System*
- *Anti-Wrinkle System*
- *Breatable Fabric*



CAIN Genuine Leather Jacket

Model: GTX1010-68

- *Water and Wind Proof Special System*
- *Double-Layer Sewing System*
- *Anti-Wrinkle System*
- *Breatable Fabric*



LEATHER & FUR & CASHMERE
QUARTZ & CERAMIC
JEWELLERY
CARPET

BILLO'S

BILLO'S
CARPET & FUR

BILGIN'S



Bilgin's Cağaloğlu

Bab-ı Ali Caddesi No:5 Fatih - İSTANBUL



Bilgin's Zeytinburnu

Kazlıçeşme Mah. Hacı Reşit Bey Sok. No: 5
Zeytinburnu - İSTANBUL



The Legacy Ottoman Store

Hobyar, Hamidiye Caddesi No:16
Fatih / İSTANBUL



The Galata Istanbul Store

Arap Camii Mah. Bankalar Cad. No: 21
Beyoğlu / İSTANBUL



Shop Online Store

 shop.bilgins.com.tr

